

**Safety Precautions**

1. Make sure that the power to the spa is off.
2. Make sure that the spa is empty.
3. Must work in safe environment & wear all necessary safety gear.
4. Please read entire instructions first and follow them step by step.

**Tools Needed**

1. Knife or Hose Cutter
2. Cordless Drill w/ Phillips Bit
3. Regular Pliers
4. 5/16" Nut Driver

**Parts List**

Qty	Description
1	Ozone Generator
1	Ozone Injector
1	Ozone Check Valve
1	6 feet of 1/4" ID Clear Hose
2	15" Wire Tie
2	1" Hose Clamps
4	Snap On Hose Clamps



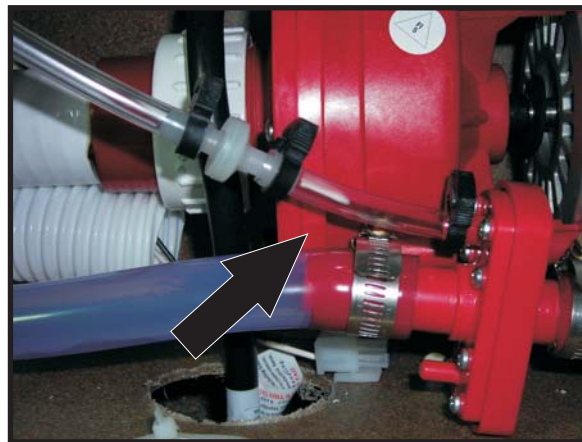
1. After disconnecting power to spa and removing all the water, open equipment door and locate the ozone injector hose.



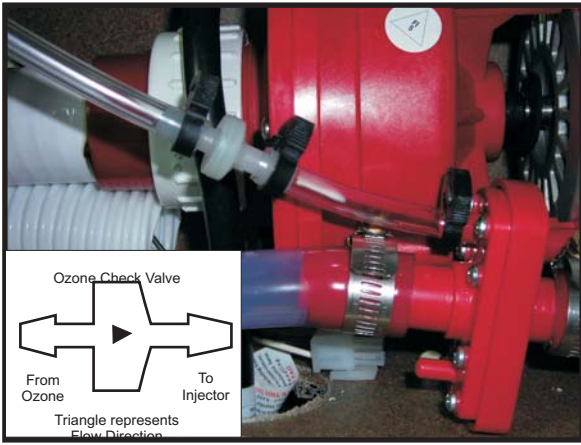
2. Cut Hose next to the ozone installation label



3. Install ozone injector between the cut hoses. Make sure that the flow arrow is pointing towards the **INLET** side of the injector.



4. Cut a 6" section of 1/4" hose and attach one end of the hose to the injector.



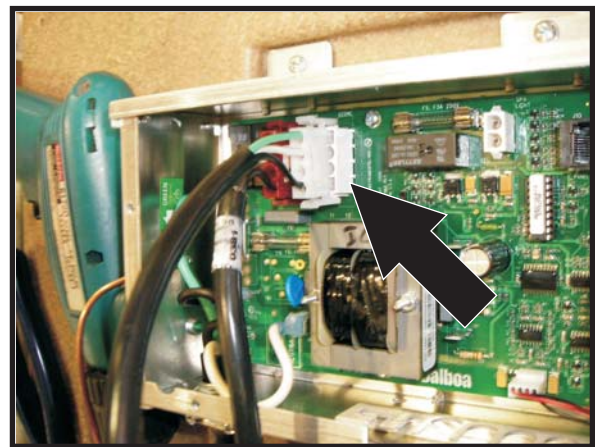
5. Ensure that check valve is facing the correct direction and attach the other end to the check valve.



6. Attach remainder hose to the ozone side of the check valve and tie up making one or two loops and tie as high as possible.

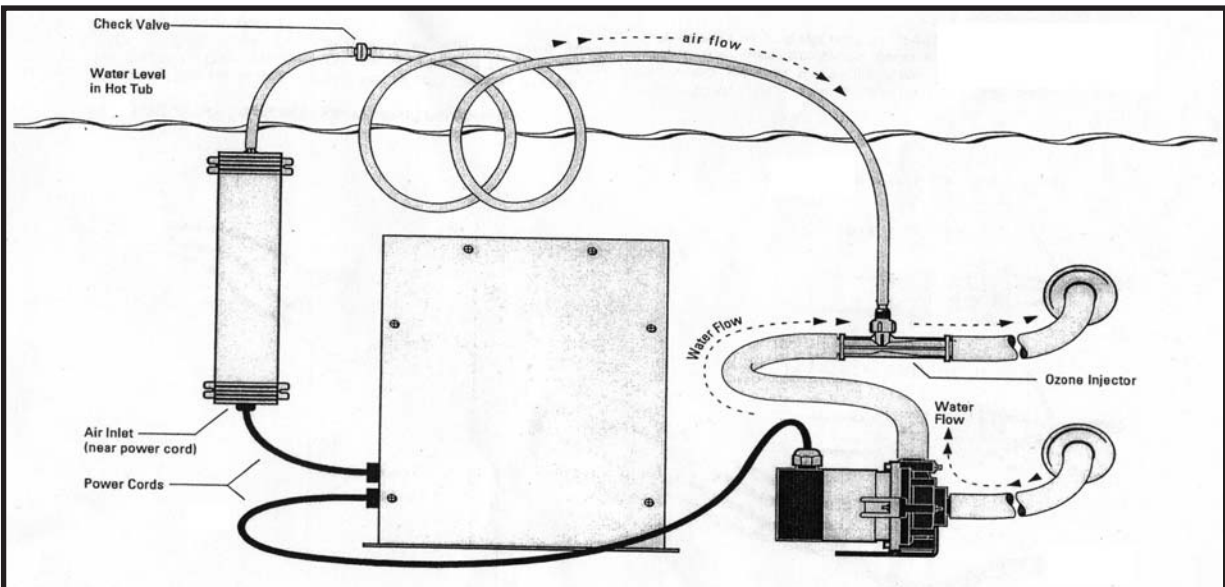


7. Install Ozonator unit in the recommended area using the provided ties or hardware. Each model will vary. See next page for recommended mounting location.



8. Open control box lid and insert the Ozonator plug in the Ozone receptacle. Make sure to re-route the power cord in the same way as the other wires.

### Reference Drawing of Complete Installation



# Suggested Mounting Location Per Spa Model



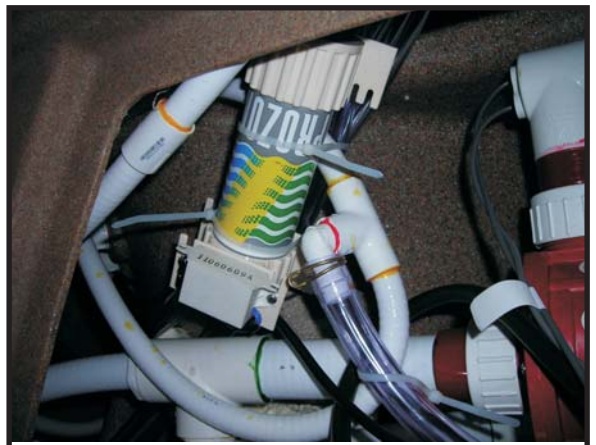
Suggested Location For EZ Spa Models



Suggested Location for X-400 Models



Suggested Location for Eclipse Models



Suggested Location for X-500 Models



Suggested Location for Fantasy Model



Suggested Location for Odyssey Model